



# 8th Grade Virtual Back to School Night





# 8th Grade - Math

In 8th Grade, instructional time will be covering 3 critical areas: expressions and equations, functions, and analyzing two and three-dimensional space. This will be done through class time, case studies exploring real world scenarios, and personal exploration. We will also dive into life skills such as budgeting, writing a check, and critical thinking. 8th Grade Math is the bridge of Pre-Algebra to 9th Grade Algebra.



## Case Study 1:

The Math Behind Voting

## Case Study 2:

The Domino Effect

## Case Study 3:

Checks and Balancing

## Class Details

Grading is as follows:  
50% - Tests, Projects, and Assessments  
25% - Quizzes  
12.5% - Homework  
12.5% - Exit Tickets

## Homework

Homework will be given at the end of class on Mondays and Wednesday. Students will only have 2 Assignments a week:

- A 5-10 minute Edpuzzle Video
- A 5-10 short

## How to contact us!

### Ms. Fears

Email:  
jfears@launch  
school.org

Phone:  
718-715-1845

### Ms. Webb

Email:  
twebb@launc  
hschool.org

Phone:  
718-715-1841

### Mr. Wirsching

Email:  
mwirsching@lau  
nchschool.org

Phone:  
718-715-1825



# 8th Grade - Science

This year in 8th Grade Science we are learning about Life Science! What keeps things alive and functioning?! Through the exploration of living things, large and small, we will discover their functions and how they connect to us and the world around us!



## Case Study 1:

**Microbiome:** How did a fecal transplant cure a patient suffering from a potentially deadly *C. difficile* infection?

## Case Study 2:

**Metabolism:** How do our bodies get and use energy?

## Case Study 3:

**Metabolism Engineer Internship:** How can we apply our knowledge of the metabolism to create a health bar that will feed people affected by a natural disaster?

## Class Details

Projects & Tests 100 pts  
Quizzes 50 pts  
Classwork & Homework 10 pts

Course work via  
Amplify.com

Differentiation is built into every lesson & Small groups are pulled during class.

## Homework

Homework is once a week (via google classroom) on Tuesdays & due on Thursdays.

Incomplete classwork will be assigned as homework

A few projects will be assigned as homework

## How to contact us!

**Ms. Murphy**  
8.1, 8.2, 8.3

Email: dmurphy  
@launchschool.org

Phone:  
718-715-1880

**Ms. Webb**  
8.1 & 8.2

Email: twebb  
@launchschool.org

Phone:  
718-715-1841

# 8th Grade ELA

This class is a place where each student will grow as a reader, writer, and independent critical thinker. Each of our case studies encourage deep considerations of power and justice. Our classroom is a space where joy for reading, serious conversations, dedication to progress, and laughter all coexist. We are so excited to have you!

Case Study 1:	Case Study 2:	Case Study 3:	Case Study 4:
Social Psychology and Propaganda	Latin American Folktales	Voices of the Holocaust	Civil Rights book clubs
<i>Animal Farm</i>	<i>The Summer of the Mariposas</i>	<i>Maus I and II</i>	<i>Various!</i>

## Contact Us!

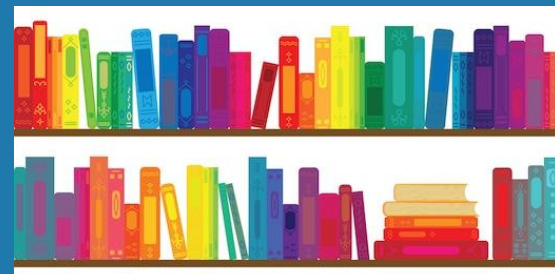
N.C. A&T and Southern:

**Ms. Duran**      [jduran@launchschool.org](mailto:jduran@launchschool.org)      (718) 715-1834

**Ms. Walczyk**      [kwalczyk@launchschool.org](mailto:kwalczyk@launchschool.org)      (718) 715-1860

Tuskegee:

**Mr. Madrid**      [amadrid@launchschool.org](mailto:amadrid@launchschool.org)      (718) 715-1893





# 8th Grade Small Group ELA



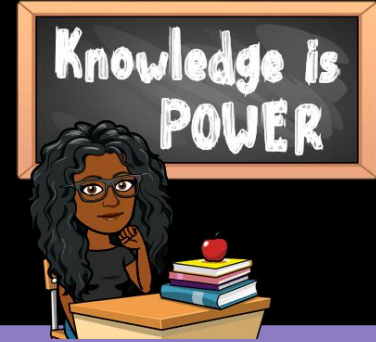
We will be focusing on reading, writing, listening, and speaking English language skills to use and master in all subjects. We will be working in small groups with a leveled reading curriculum to support all students at any level.

Case Study 1:	Case Study 2:	Case Study 3:
Phonics	Leveled Language Intervention (LLI)	Guided Reading

Class Details	Homework	How to contact us!
Small group reading and writing assignments focusing on comprehension and reading fluency. We will be reading fiction, nonfiction, and poetry.	Independent Reading, worksheets, writing tasks	<b>Teacher : Ms. Mandelbaum (M)</b>
		Email: <a href="mailto:zmandelbaum@launchschool.org">zmandelbaum@launchschool.org</a>
		Phone: (718) 715-1874

# 8th Grade- Social Studies

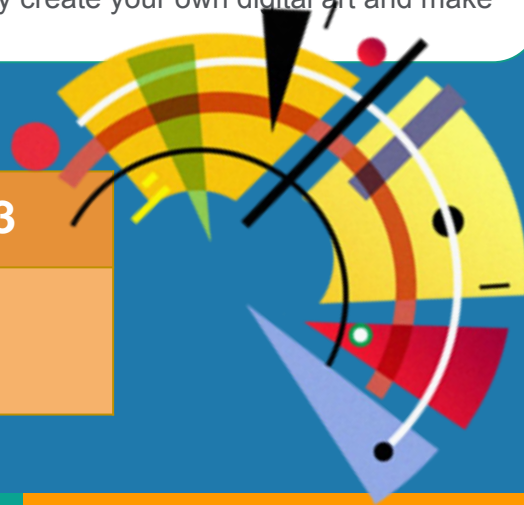
Students will be engaging in a year long discourse surrounding methods of leadership. Through various case studies spanning from the late 1700s to the present day, students will be analyzing how the individual can influence society through their leadership and interrogating how certain forms of leadership can oppress or liberate members of a group. Students will act as historians as they research America's early history, Manifest Destiny, The Civil War and Reconstruction, the Jim Crow Era, and the Civil Rights Movement.



Case Study 1:	Case Study 2:	Case Study 3:	Case Study 4
Leadership: What does it mean to be a leader?	What happened to the Native Americans?	What does it mean to be free?	Civil Rights Movement: How do people change history?
Class Details		How to contact us!	
Exams & Projects	<b>Mrs. Nikiema -</b> <a href="mailto:snikiema@launchschool.org">snikiema@launchschool.org</a>  (718)- 715-1865	<b>Ms. Walczyk</b> kwalczyk@launchschool.org (718) 715-1860	Tuskegee: <b>Mr. Madrid -</b> amadrid@launchschool.org
Essays & Quizzes			
Participation & Classwork			
Homework (1 per week)			

# 8TH GRADE DIGITAL ART

There are so many different types of art in this world fine art, classical art, visual art but the impact of digital art and design is all around us, often in ways that you probably aren't even aware of! After taking Digital Art and Design, you'll enjoy a deeper understanding and appreciation for all things digital as you explore this special genre of art found in everything from advertising to animation to photography and beyond. In this course, you'll learn about the evolution of art, the basic principles of art and design, and the role of art in politics and society. Additionally, you will actually create your own digital art and make it come alive.



## Case Study 1

Propaganda & Persuasive  
Art Techniques (ELA Collab)





## Case Study 2

Storytelling through  
animation: Trail of tears  
(Social Studies Collab)

## Case Study 3

Passion Project


## Class Details

-  1 Mini art projects per case study
-  1 Major art assignment per case study
-  1 Artist Journey Slide (**Document each stage in their art making process**)
-  1 Artist statement per case study

## Contact Me

**Ms. Scott**





8.1 8.2 8.3

 (718) 715-1832

 [tscott@launchschool.org](mailto:tscott@launchschool.org)

## Independent Work

**Check google classroom!**

-  Final digital art piece submission
-  In class project completion
-  Artist statement (Per major project)
-  Links to in class quiziz & edpuzzle

- **PE's** goal is to attain skills such as strength, sports IQ, speed , power, endurance, good health and overall **fitness**.

- Teach camaraderie and teamwork and have it developed and strengthened through **physical** activities
- Provide great mental health exercises.

# Phys Ed - 6th, 7th, 8th and M.S.

## Case Study 1:

**Obesity In America**  
How I can combat it with  
physical activities

## Case Study 2:

**You are what you eat**  
A deeper understanding of  
obesity by studying nutrition  
and how it affects your body

## Class Details

-Weekly Exercise (**Student must have camera on to get credit**)

-Weekly Quick Quiz (**Will happen during live lesson**)

-Each quarter will end with a quiz discussing what they've learned so far. ( Will be a mixture of weekly quick quizzes)

## Contact Me

Email: [Bleslie@launchschool.org](mailto:Bleslie@launchschool.org)

Phone: (718)715-1872





# SEL AFTERNOON ACTIVITIES



## WHY ARE SEL ACTIVITIES IMPORTANT?

- All students belong and can succeed
- 75% of our families stated they will send their child to outdoor activities
- 35% of families stated their child will participate remotely

## SEL OUTDOOR/REMOTE ACTIVITIES SCHEDULE

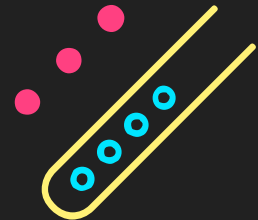
1. Activities will begin on 9.21.2020
2. SEL Outdoor/Remote Activities will be calm and collective

## OUTDOOR/REMOTE ACTIVITY DAYS 1:15 pm - 3:00 pm

- 6th Grade/MS - Tuesday
- 7th Grade - Thursday
- 8th Grade - Monday



# Launch Clubs



Launch Clubs is a way to focus on social bonding, interest, and extracurricular activities. Fun is a fundamental need that all people have. In school, if we don't provide fun, students find ways of providing it for themselves. At Launch clubs we are a balance between academic learning and social emotional learning.

## Launch Clubs Description

Launch Clubs will provide:

- **1 hour of an activity**
- **Real Life Skills**
- **Space to Showcase your talents**
- **Building on HOHAM**
- **Virtual and/or Outdoor Outlet**
- **Social Bonding and Crew**
- **Community Collaborations**

**Only on  
Fridays  
4pm -5pm**

### What is a Launch Club?

A Launch Club is structured choice time for students who meet weekly attendance standards as a celebration of their hard work. It also provides space for students who did not meet restorative expectations to reflect and plan how they will improve in a quiet, focused space outdoors, or virtual. It is called Launch Clubs because, like a variable, Clubs will represent different things depending on student's level of performance and the activities they choose.

## 8 Virtual Clubs

**Youtube, Bandlab beats,  
Chorus, Cooking,  
Yearbook, Journalism,  
Stepping into Afrofuture,  
House of Arts**

## 6 Outdoor Clubs

**Majorette, Step, Spanish, Live,  
Love, Lanyards, Mindfulness and  
Meditation Circle, and Amazing  
Athletes**

## How to contact us!

**Ms. Logan**

[Tlogan@launchschool.org](mailto:Tlogan@launchschool.org)

**929-390-8439**

**Ms. Pratt**

[PPratt@launchschool.org](mailto:PPratt@launchschool.org)

**718-715-1858**

# Sheryl Davis

## Parent Engagement Coordinator

Parent Engagement Coordinator

- Support to Parents of Students who utilize Special Education Services

**Volunteer**

**Engage**

**Join the Closed  
Parent facebook  
Page**

**Communicate  
Participate**

**Become an active  
member of the  
Launch Community**

- Parent Association Meetings
- Parent Circles ( A safe space to meet and discuss any family /school /concerns)



# Counseling Team

Our mission is to ensure that every student at Launch has what they need to be successful in and outside of the classroom. We specialize in collaborating with Staff, Families and the greater community to address all areas of the child's life.

**Dominique Marshall 6th**



**Nicole McCloud 7th**



**Corey Warren 8th**



**Individual  
Group  
SEL Groups  
Culture Support  
Behavior  
Management  
IEP Support  
Parent Counseling  
Resource Referrals**

[Family Survey](#) : To Gather information to support throughout the school year as needed.

# Supply and Uniform Pick Up

Drop off your old chromebook

**Next Monday 9/14**

**1-3pm**

**In the School Yard**





# Thank you!

